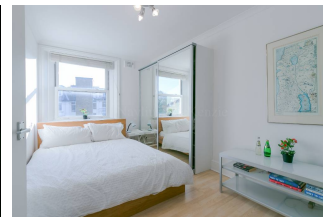


Haverstock Hill, NW3 2BE, Belsize Park,  
NW3



## Haverstock Hill, NW3 2BE, Belsize Park, NW3

We are delighted to offer for sale this bright and attractive one bedroom top floor converted flat, the flat is tastefully presented throughout & benefits from laminate wood flooring, a separate modern fitted kitchen/diner, south west facing reception room & bedroom, bedroom with built in wardrobe & modern bathroom. The property is situated in a fabulous location in Steele's Village and is therefore only moments from the local shops, cafe, and restaurants. Viewing highly recommended.

We are delighted to offer for sale this extremely bright and attractive one bedroom top floor (third) converted flat, the flat is tastefully presented throughout and benefits from laminate wood flooring, a separate modern fitted kitchen/diner, south west facing reception room and bedroom with built in wardrobe and modern bathroom. The property is situated in a fabulous location in Steele's Village and is therefore only moments from the local shops, cafe, and restaurants, it is also within walking distance of England's Lane and Primrose Hill, with its local boutique shops, street cafes, restaurants and of course the park, it is almost equidistant of both Chalk Farm tube station (Northern Line) and Belsize Park tube station (Northern Line). The lease is in excess of 900 years, the service charge is approx £1500 per annum. The property is chain free. Viewing is highly recommended.

**£450,000**

### Features

- ✓ South west facing bedroom
- ✓ South west facing reception room
- ✓ Fitted kitchen/diner
- ✓ Modern Bathroom
- ✓ Top floor flat
- ✓ Laminate wood flooring
- ✓ Situated in Steele's Village
- ✓ Chain free



1 Bedroom



1 Reception



1 Bathroom